

# Bridges of Los Angeles

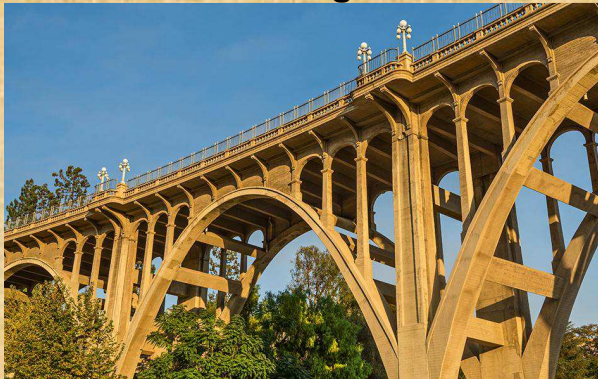
## 1. Vincent Thomas Bridge



This is one of my favorite bridges in LA, located in San Pedro, it spans 1,500 feet over the LA Harbor linking San Pedro with Terminal Island. The beauty of this bridge is that you can see it from the 110 fwy, while boating below or even just driving across it.

**Tip:** Park your car near the Fanfare Fountains (Gateway Plaza) off of Harbor Blvd, and enjoy the dancing water show along with a magnificent view of the bridge-makes for a nice picture at night. Note the 2023 West Harbor development of the old Ports O'Call area.

## 2. Colorado Street Bridge



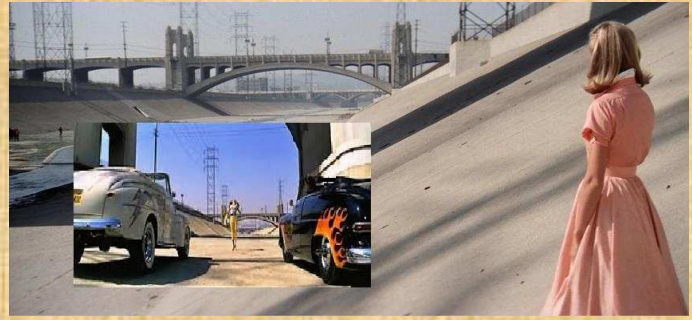
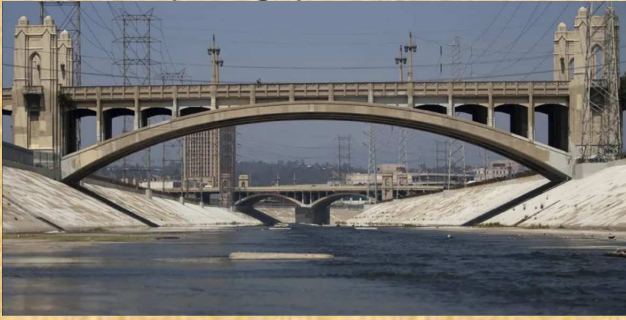
Also known as suicide bridge, this old bridge in Pasadena is nice to drive over for a scenic view of old town and the surrounding area.

The Colorado Street Bridge is a historic Beaux Arts bridge that spreads over Pasadena. The bridge was built across the Arroyo Seco (seasonal river) to ease travel between Pasadena and Los Angeles. Before the bridge was built, people had to go down into the Arroyo Seco, cross the river and come back up the other side. Today it offers visitors picturesque views of the city and is featured in several television shows and movies. Most recently the Colorado Street Bridge was featured in the 2016 Oscar nominated film "LA LA Land."

**Tip:** You can burn a few calories by biking or walking across the bridge for a wide shot of the bridge OR explore it by parking your car at La Casita Del Arroyo and hiking under (around the bridge) to see how spectacular it is, I dare you not to take a picture.



### 3. 6th Street (Bridge) Viaduct



6th Street Bridge (before) – Thunder Road from the movie GREASE!



6<sup>th</sup> Street Viaduct (2022) with Viaduct PARC

The 6<sup>th</sup> Street Viaduct a viaduct bridge that connects the Arts District in Downtown Los Angeles with the Boyle Heights neighborhood.

The newly completed bridge is designed by architect Michael Maltzan and the HNTB Design-Build team. The new design has several green spaces built under and around it. Bridge construction has experienced several years-long construction delays and multimillion-dollar cost increases. The bridge opened on July 9, 2022.

Among the numerous bridges in downtown, this one that stands out as the most iconic isn't 'technically' a bridge.



The viaduct has played a scene or two in several movies here Terminator 2. Also many photo shoots take advantage of its marvelous view of the L.A. skyline.

**Tip:** Going by foot is best way to capture this bridge. You can see the whole bridge from the 4th Street or 7th Street Bridges (both pretty cool in their own right), don't forget to look down and marvel at the L.A. River and train yard.



#### 4. Shakespeare Bridge

The Shakespeare Bridge, officially known as the Franklin Avenue Bridge was designed by civil engineer J.C. Wright of the Los Angeles Bureau of Engineering. This span, sometimes called the most romantic bridge in Los Angeles, was built in 1926 to provide easy roadway access from the Franklin Hills Neighborhood to the East Hollywood and Ivanhoe District. It also opened up the hills of Franklin Hills for residential development. It is made of concrete and decorated in a Gothic style, and designated Los Angeles Historic-Cultural Monument #126 in 1974.



Located in the Los Feliz neighborhood, built in Gothic style, and named after the famous playwright, the altar like posts make it a unique and cultural landmark. This is one of the smaller bridges on the list so, if you aren't paying attention then you'll definitely drive across it without realizing.



The bridge was rebuilt in 1998 after the Northridge earthquake due to concerns that the structure would not be stable in the event of an earthquake in the Franklin Hills area. As part of the seismic retrofit, the deck, sidewalks and railings were removed and reconstructed using reinforced concrete. The expansion joints were also removed, so the bridge deck is now a one-piece structural diaphragm built to transfer all seismic forces into the abutment walls at either end of the bridge. All of the rebuilding was done to preserve the historic appearance of the bridge.

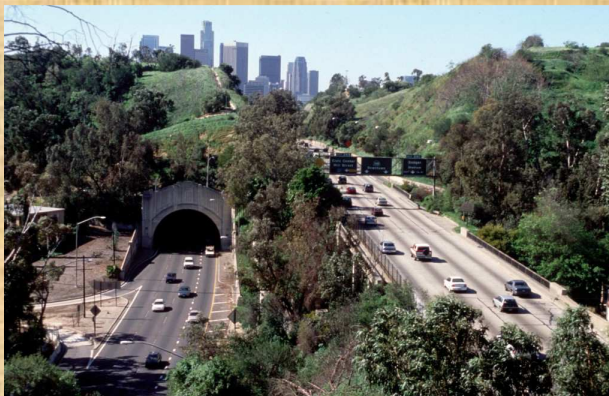


## 5. Elysian Park 110 Freeway Bridge



In the heart of Elysian Park there is a small bridge that goes over the 110 Freeway South. Take a minute to enjoy the view of Downtown LA, laugh at the congested freeway below and try not to resist taking a selfie or two.

**Tip:** Visit in the late afternoon or early mornings for nice lighting when shooting the skyline and surrounding hills.



Elysian Park is the name of a municipal park and the adjacent neighborhood in Central Los Angeles, California.



Encompassing Chavez Ravine, where Dodger Stadium is located, the neighborhood is home to the city's first Catholic high school, an elementary school and the Los Angeles Police Academy. The Elysian Park neighborhood is flanked on the north and northeast by Elysian Valley, on the east by Lincoln Heights, on the southeast and south by Chinatown and on the southwest, west and northwest by Echo Park. Street and other boundaries are: the northern apex at Exit 138 of the Golden State Freeway, thence southeasterly along the freeway, southerly along the Los Angeles River, westerly along North Broadway, northwesterly along Stadium Way, Academy Road and northerly along Elysian Park Drive.



## 6. Venice Canal Bridges



Not Venice Italy but Venice, CA! It's a great place for an evening stroll with a cup of coffee. There are many foot bridges surrounding the Venice Canals and lots of unique houses to ogle at.



Sandra Bullock (Angela Bennett) Venice Canal home in "The Net"

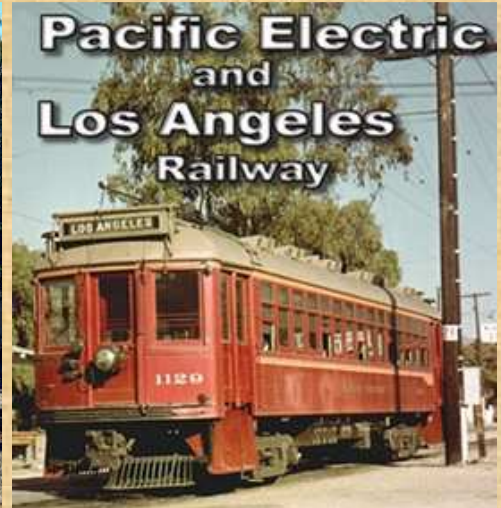


Ben Chaplin waits here for Janeane Garofalo in the "Truth About Cats & Dogs"

**Tip:** Make all your Instagram followers jealous and go an hour before sunset so you can get pictures of the residential landscape reflecting onto the water with flaming sunset colors as a backdrop.



## 7. Pacific Electric Railway El Prado Bridge



This free standing structure is a historic double track arch train bridge, located down the street from downtown Torrance. It is no longer in use, but was once used to connect Torrance with San Pedro instantly via train.



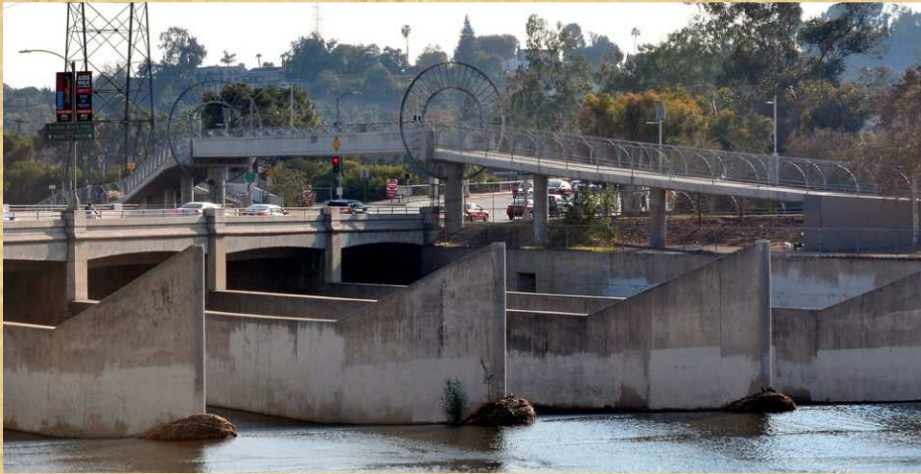
Circa 1913



National Historic Place was beautified and rededicated in 2015



## 8. Alex Baum Bicycle Bridge



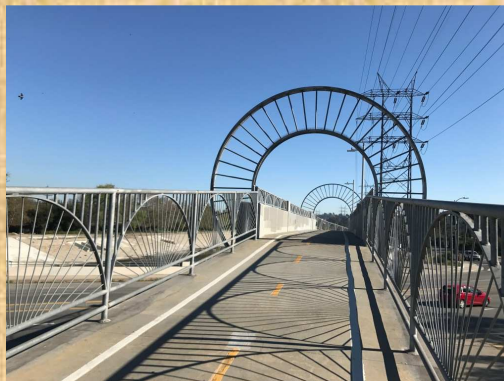
*Credit: Amatullah Guyot*

This bridge is mainly for you bikers out there (and walkers too). Located 120 feet above Los Feliz Blvd near Los Feliz Golf course, this bike bridge stands above where the 5 and 110 freeways cross, the path continues along the 110 fwy and the LA River so you'll never be short of sights to see.



bike path along the Los Angeles River - Glendale Narrows

The Baum Bicycle Bridge was built in 2002 and is part of the Los Angeles River bike path.



**Tip:** Take a friend and go for a nice bike ride or walk and make sure to bring some form of a camera because the best pictures of this bridge are from actually crossing it.



## 9. Ballona Creek Bridge



Located in Marina Del Rey, this bridge crosses over Ballona Creek to the one of the marina jetties where you can watch sailboats come and go out to sea. The bridge is popular among a large crowd of bikers and fishermen alike. You can continue along the bike/walking path into Marina Del Rey along Fiji Way.



**Tip:** Go around sunset and stand on the bridge facing the ocean to capture the sailboats with a sunset backdrop. And/or walk out along the jetty to the marina entrance.



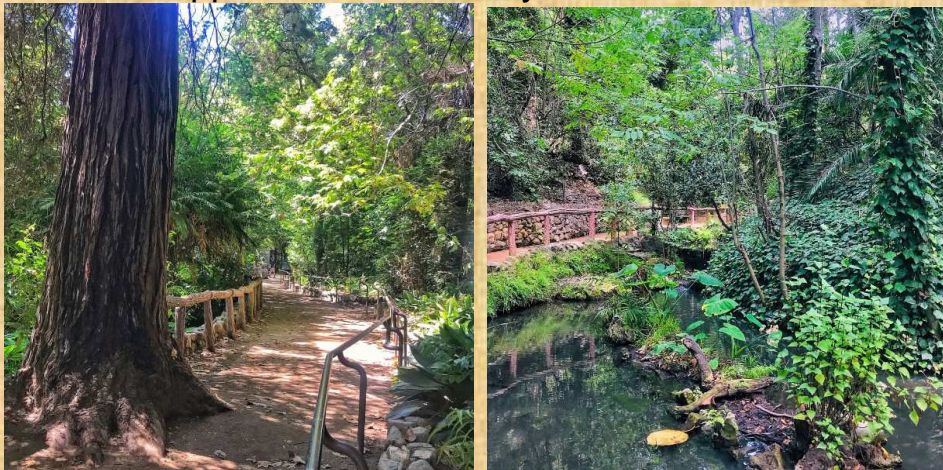
1930's Venice oil fields - view from bridge and horse-drawn wagon



## 10. Fern Dell footbridges, Griffith Park - Los Feliz



In Lower Fern Dell, nine footbridges connect the pathways of the Fern Dell Nature Trail, whose waters are what likely drew Native Americans like the Tongva (aka Gabrielino tribe) to the Western Canyon of what's now Griffith Park, now known as Fern Dell Canyon. The tribe's former council grounds, called Mococahuenga, are located at the Fern Dell entrance and were designated Los Angeles Historic-Cultural Monument #112. Be sure to also look for historic grottos, benches carved out of stone, and a reproduction of a supposed "fountain of youth."



The Fern Dell Nature Trail is accessed easily off the drive (with free parking!).



**Tip:** Check out the Trails Café and their scones!